

SHD12R - Conventional 4 Wire Smoke + Heat Detector

Product Description:

This product consists of Photoelectric smoke and heat detector. It detects the smoke by a couple of infrared diodes. The principle of detecting is granule in the smoke which can reflect infrared light. Infrared diodes are placed in the special chamber. The chamber can shield external light, but doesn't affect the smoke into it. While there is no smoke, the diode can receive very weak infrared light if detects smoke give alarm signal to Control Panel.



Product Features & Specifications:

- Fire LED Indication.
- Dual Sensing input (Smoke + Heat)
- Remote LED Indicator Output
- Stylish Look
- Compatible with all Fire Panel
- Low Standby Current

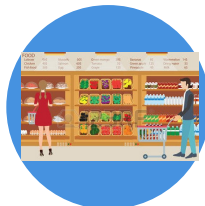
Technical Specifications

Power Supply	9 to 33 VDC	Output	Relay Output
Standby Current	4mA (Relay NO) 13mA (Relay NC)	LED Indication	RED Fire LED Indication
Alarm Current	19mA (Relay NO) 9mA (Relay NC)	Heat Detection Level	> 57°C
Humidity	0% to 95% Rh	Working Temperature	-10°C to 60°C
Contact Rating	0.5A@DC28V		

Applications:



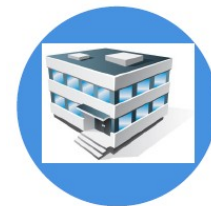
Offices



Shops



Factories



Complex