

Conventional Heat Detector HD12

Product Description:

This product is used for detect the Heat and sending signal to control panel. Thermistor base technology is used in this sensor. The basic principle of detecting atmospheric temperature By using Temperature sensing Resistor it is call as Thermistor.

When atmospheric temperature is increases above 60°C then detector is generate signal and send to Fire panel OR Control Panel.



Product Features & Specifications:

- Dual Fire LED Indication.
- Thermistor Technology is used
- Current Output
- Stylish Look
- Compatible with all Fire Panel
- Low Standby Current

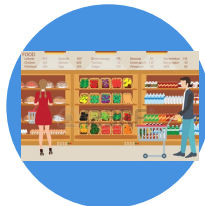
Technical Specifications

Power Supply	9 to 33VDC	Output	Current Output
Standby Current	20uA	LED Indication	Dual RED Fire LED Indication
Alarm Current	35mA to 83mA	Heat Detection Level	> 60°C
Humidity	0% to 95% Rh	Working Temperature	-10°C to 50°C

Applications:



Offices



Shops



Factories



Complex