

SD9-1 Standalone Smoke Detector (1 Year Battery Life)

Product Description:

This product is a battery operated photoelectric smoke detector. Advanced photoelectric sensor technology is used inside detector.

This product is used for detect the Smoke detection and sending signal to control panel. Photoelectric technology is used in this sensor. The basic principle of detecting carbon particle present in smoke by using Infrared diodes. When smoke entering the chamber diode are receive more light and the detector can give out alarm signal and also turn ON red led & Buzzer for local indication.

Smoke alarm will chirp once every 40s to remind user of replacing a new battery.



Product Features & Specifications:

- 1 Year Battery Life
- RED Fire LED Indication.
- Photo-Electric Technology is used
- Buzzer Output
- Fire Test Button
- Low Battery Warning

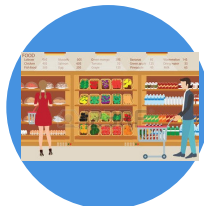
Technical Specifications

Power Supply	9VDC(Battery)	Battery Life After Low Battery	> 30days
Standby Current	12uA	Output	Buzzer (> 85db) RED LED Indication Fire Test Switch
Alarm Current	10mA	LED Indication	RED Fire LED Indication
Humidity	10% to 90% Rh	Working Temperature	-10°C to 50°C

Applications:



Offices



Shops



Factories



Complex