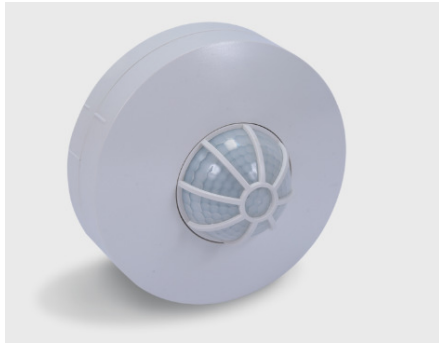




LS-29A - Ceiling Surface Mount Sensor Light Switch

Product Description:

LS 29A is used to designed for automatically turn ON a light when any human motion is detected and to turn it OFF after you have left the area. The Sensor senses motion in a 360-degree area up to 30 ft. away for Sensor. It is used to connect any lighting source like CFL, Led, tube light, etc. Light Sensor reduces lighting costs by automatically turning On / OFF room, office, or closet lights, when a person enters in. These Sensor saves electrical energy & power. Basic principle of the sensor is to detects "Motion" i.e. to detect "Infrared Energy" of human body and as per this it operates output devices.



Product Features & Specifications:

- Starts functioning only when ambient light is below preset
- Switches ON lights on sensing motion
- Keeps lights ON till the motion is detected
- Turns OFF the light after the set time.
- Stylish Look

Technical Specifications

Power Supply	230VAC/50Hz	Time Setting	5Sec to 12min.
Rated Load	1200W	Lux Setting	<20Lux to 2000Lux
Detection Angle	360°C	Detection Range	3M to 10Meter
Humidity	0% to 95% Rh	Installation Height	2.5M to 3.5Meter

Applications



Realty Automation & Security Systems Pvt. Ltd.

5,New Sadashiv Peth, Next to Alka Talkies,Pune-411 030. Phone: +91 90110 33259/60.

E-mail: sales@vighnaharta.in

Web: www.vighnaharta.in